



INDUSTRIAL METALWORK STRUCTURES

Italian talent, German quality,
Slovakian production

WWW.BAMUSTEELWORKS.COM

QUALITY CONTROL MANAGEMENT, A TURNKEY MANUFACTURING SOLUTION: THE STRENGTH OF A TEAM IN THE MECHANICAL CONSTRUCTION INDUSTRY



From consulting to assembling,

Team Tecnocarp provides customers with a whole set of competences and experience to supply the **finished product**.



NIKVA
CONSULTING



CML
INNOVAZIONI
DESIGN
ASSEMBLY



TECNOCARP
CARPENTERIA INDUSTRIALE

MECHANICAL
CONSTRUCTIONS



ARES
LAVORAZIONI
MACCHINE
UTENSILI

MACHINING



CIPRIND

FITTINGS



BAMU

MECHANICAL
CONSTRUCTIONS

**35.000
mq**

THE TEAM'S
COMBINED
PRODUCTIVE AREA

**6.000
ton**

TONS OF METAL
PROCESSED IN A
YEAR ON AVERAGE

2.500

THE ORDERS
PROCESSED BY THE
TEAM IN A YEAR

**21
mil**

THE TEAM'S
COMBINED
TURNOVER

TEAM TECNOCARP'S CERTIFICATIONS:

UNI EN ISO 9001 | UNI EN ISO 3834-2 | UNI EN 1090-1
UNI EN 15085-2 | UNI EN ISO 14001

NIKVA

Driving companies to enhancement

Organizational and management consulting are the heart of our work: since 1996, established industrial companies as well as small manufacturing companies throughout Northern Italy have restructured their business organization with our help and obtained the certification of management systems in the areas of quality, environment, health and safety, welding. **GLOMO** is our division that offers calibration services for measuring instruments.

Podenzano (PC - Italy) | +39 0523 985 396
quality@nikva.it | www.nikva.it

ARES

Traditional heart, industrial production

ARES owns a machine fleet like few others in Italy, allowing the machining of very long pieces with the maximum precision. Soralue FR14, the biggest machine, has 2 opposite travelling columns which can work independently and a stolle working table of 3x16 m. to mill and bore pieces up to 14 x 4.2 x1.6 m3 and 32 ton.

Pontenure (PC - Italy) | +39 0523 517082
info@aresfresature.com | www.aresfresature.it

CML INNOVAZIONI

You need it, We fulfil it

CML Innovation cooperates with customers to design new solutions for automation and production, with a focus on safety norms. We offer thermal, structural and vibrational analysis thanks to our FEM systems. The new premises have specific tools and a 1000mq production area to assemble complete and complex systems.

Podenzano (PC - Italy) - +39 0523 902011/86
dmarangonecmlinnovazioni.it
www.cmlinnovazioni.com

CIPRIND

Fitting genius

Thanks to its specialised staff, CIPRIND supplies truncated-cone rolling, fitting completion, submerged arc welding, barred tees and NDT controls. The unique cold-plate rolling machine, especially designed for our use, can process plates up to 50 mm thickness and 1,550 mm width with a force of 350 ton.

Podenzano (PC - Italy) | +39 0523 523152
info@ciprind.com | www.ciprind.com

TECNOCARP

The one and only reference for your metalwork structures

Medium-heavy steel metalwork and machining are the beating heart of our Team's activity, led by TECNOCARP. Thanks to its long-term experience, Tecnocarp can manage all phases of production, standing as the only point of reference for customers. Since 1973, thanks to great experience and innovation, Tecnocarp has been producing complex structures up to 30 ton.

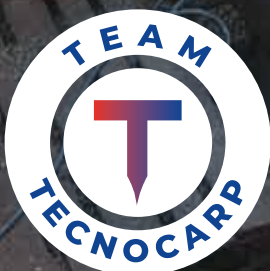
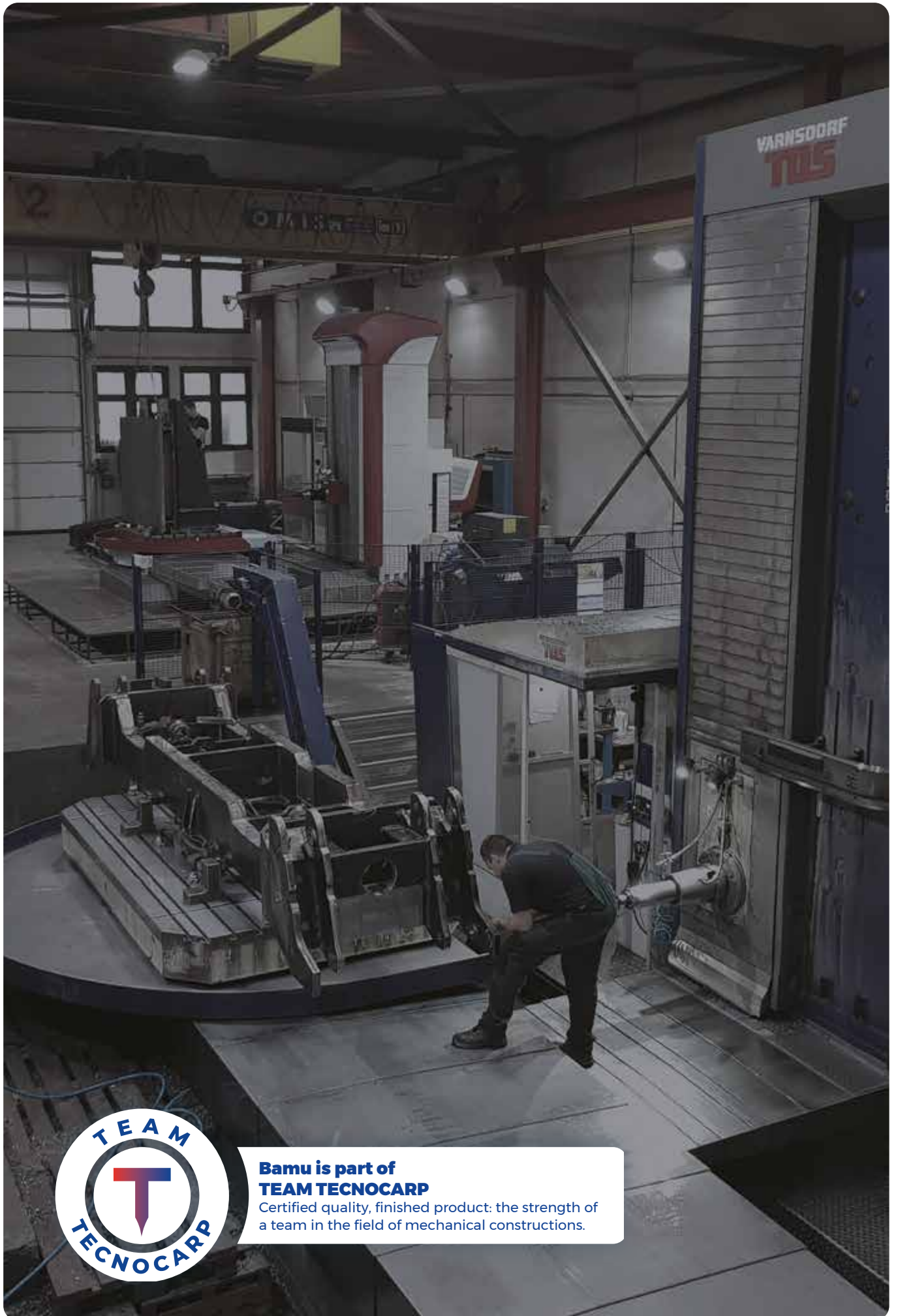
Pontedell'Olio (PC - Italy) | +39 0523 875493
info@tecnocarp.it | www.tecnocarp-pc.com

BAMU

Italian talent, German quality, Slovakian production

Design, medium-heavy metalwork, welding, thermal treatments, machining, assembling and delivery: Team Tecnocarp's whole service is available in Europe with BAMU. Thanks to the overhead cranes up to 40 tons and a milling and boring TOS centre with a working area of 5 x 3 x 2.2 m and a stolle turning table of 17.5 ton, Bamu can carry out the whole production in just one plant.

Valaská (Slovakia) | +421 48 3810752
bamu@bamu.sk | www.bamusteelworks.com



**Bamu is part of
TEAM TECNOCARP**

Certified quality, finished product: the strength of
a team in the field of mechanical constructions.

BAMU

Italian talent, German quality, Slovakian production

In its 20,000 mq premises, Bamu produces steelworks of great dimensions and much more.

Bamu is able to deliver the finished product, complete of design, welding, thermal treatments, machining, assembling and delivery.



ITALIAN TALENT

Bamu finds its spirit on the Italian gifts of experience, flexibility, customer care.



GERMAN QUALITY

BAMU is at the highest European standard for the quality of its production and processes, thanks to the certifications in the field of welding.



SLOVAKIAN PRODUCTION

Bamu is at the heart of Europe: the many challenges of the European market grant Bamu's constant quality at a competitive price.

Thanks to its central place in Europe, Bamu is the ideal reference point for companies that have relocated part of their production or that require series products.

CERTIFICATIONS

Quality can't just be achieved and archived:
on the contrary, it's the arriving and starting point at the same
time.

In Bamu, we have decided to certify our quality in every possible
sector and to commit to achieve new objectives.

UNI EN ISO 9001

Since 2000, to grant
production quality and
technical innovation.

UNI EN ISO 3834-2

Comprehensive quality
requirements for
fusion welding of
metallic materials.

UNI EN 1090-1

Requirements for
conformity assessment
of performance
characteristics for
structural steel
and aluminium
components.

UNI EN 15085-2

Requirements for
conformity of welded
railway vehicles and
components.

UNI EN ISO 14001

Management
system requirements
to enhance the
environmental
performance
of an organization.

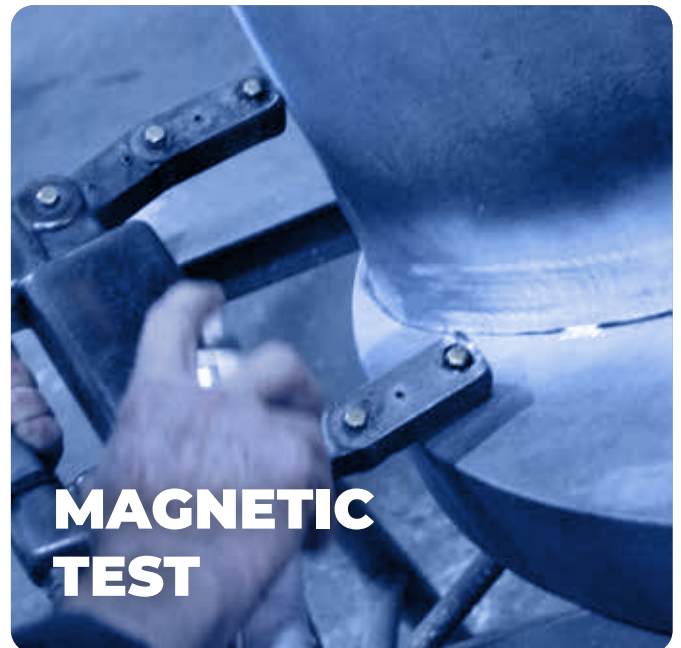


TESTING DEPARTMENT

Not only dimensional tests: in the testing department, Bamu carries out upon request many NDT tests, such as ultrasound, magnetic and penetrant testing. The testing staff have 2nd level certifications, according to: UNI EN ISO 9712 and ASNT-SNT-TC-1A.



**ULTRASOUND
TEST**



**MAGNETIC
TEST**



**VISUAL
TEST**



**PENETRANT
TEST**

REASONS TO CHOOSE BAMU

The granted supply of an all-round product at highly competitive prices: this is **BAMU**.



**TECHNICAL
OFFICE**



**PLANNING
SERVICE**



**CUTTING
DEPARTMENT**



**BENDING
PLATE ROLLING**



ASSEMBLING



WELDING



STRAIGHTENING



TESTING



**HEAT
TREATMENTS**



**NON-
DESTRUCTIVE
TESTS**



MACHINING



**SURFACE
TREATMENTS**



**MECHANICAL
MOUNTING**



DELIVERY



**TECHNICAL
SUPPORT**



MACHINING

	FERMAT WFC 10 CNC	TOS WHQ 13 CNC	FERMAT WRF 160 CNC
X in mm	2000	5000	13500
Y in mm	2000	3000	4000
Z in mm	1250	2200	1200
W in mm	730	800	1000
TURNING TABLE in mm	1400x1800	2000x3000	2500x3000 with V= 2400
LOAD CAPACITY in ton	5	17,5	25
CNC	Heidenhain	Heidenhain	Heidenhain
YEAR OF CONSTRUCTION	2018	2015	2017



**TOS WHQ
13 CNC**



**FERMAT
WRF 160 CNC**



SANDBLASTING AND PAINTING

BAMU is able to supply the service of sand blasting and painting according to customer's specifications.



The sandblasting / shotblasting and liquid painting facility ensures the highest treatment quality. Moreover, the 'state of the art' technology grants the reduction of air pollutant emissions.

The sandblasting and shotblasting facility has a 16000x5530x5000(H) mm booth.

The painting facility has a 16000x5530x5000(H) industrial oven booth with semi-vertical air system and double aspiration by walls.





SUMMARY OF SECTORS

MACHINE TOOLS	P. 16
CONSTRUCTIONS	P. 21
RAILWAY SECTOR	P. 22
PRESS BENDING SECTOR	P. 29
WOODWORKING MACHINERY	P. 30
AIRPORT SECTOR	P. 32
OFFSHORE	P. 33
PLANT ENGINEERING SECTOR	P. 34
PRESS SECTOR	P. 37
DRILLING SYSTEMS	P. 38
WIRE DRAWING MACHINES	P. 43
ENERGY SECTOR	P. 44



REDUCTION UNITS	P. 45
LIFTING SYSTEMS	P. 46
EARTHMOVING SECTOR	P. 47
SHIPBUILDING	P. 49
MARBLE WORKING MACHINERY	P. 50
TRUCK-BUILDING SECTOR	P. 51
WIND ENERGY SECTOR	P. 52
PACKAGING	P. 52
NONWOVEN FABRIC SECTOR	P. 52
AMUSEMENT PARKS	P. 53
SHREDDING & RECYCLING	P. 54
MILITARY SECTOR	P. 55

THE EXPERTISE OF AN EXPERIENCED COMPANY, THE FLEXIBILITY OF A COMPELLING STAFF

MACHINE TOOLS

FROM 1
TO 37



1



2



3



4



5



6



7



8



9



10



11

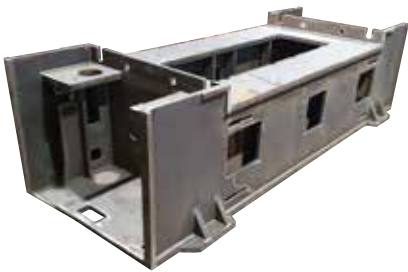




12



13



14

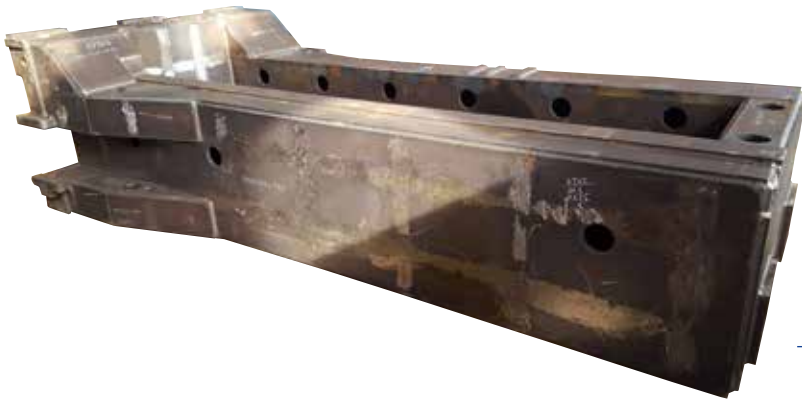


15



16

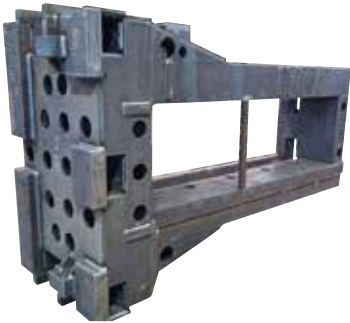




17



18



19



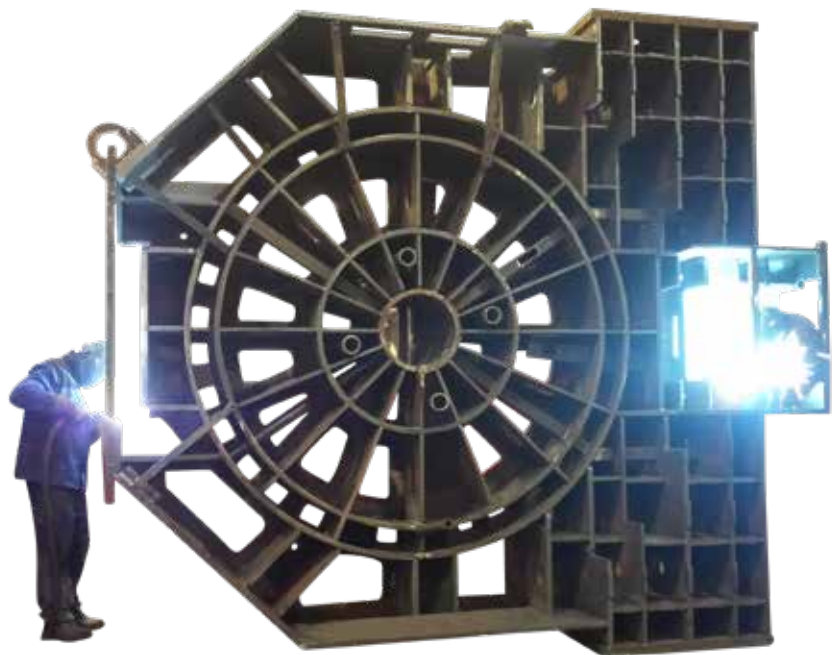
20



21



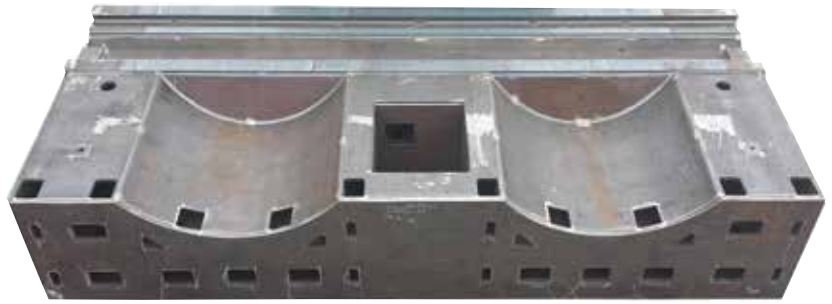
22



23



24



25



26



27



28



29



30



31



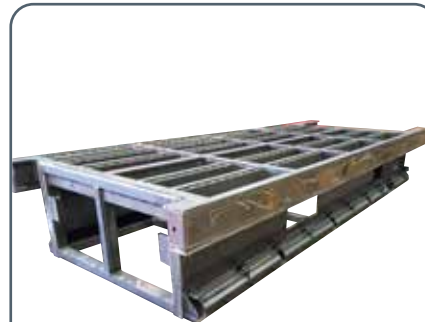
32



33



34



35



36



37

CONSTRUCTIONS FROM 38 TO 41



38



39



40



41

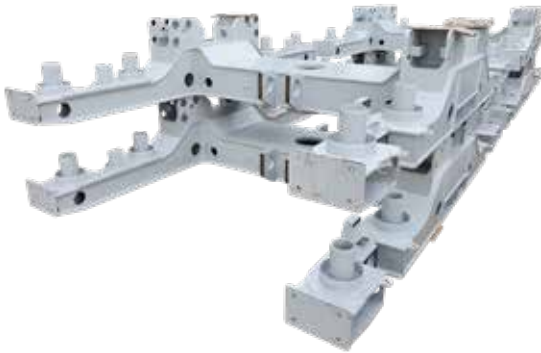


42

**RAILWAY
SECTOR**
FROM 42
TO 83



43



44



45



46



47



48



49



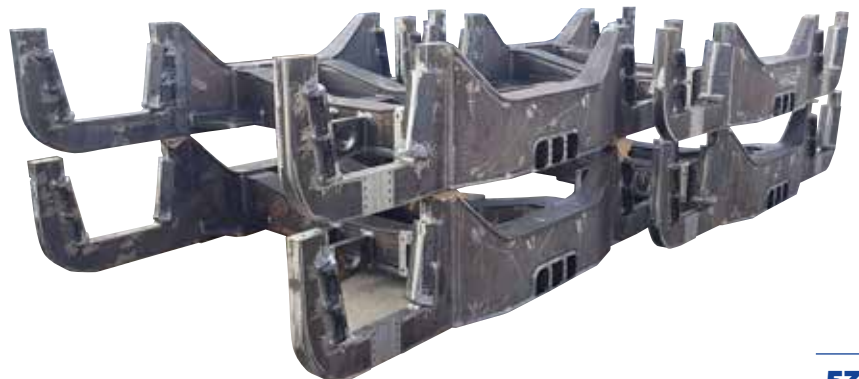
50



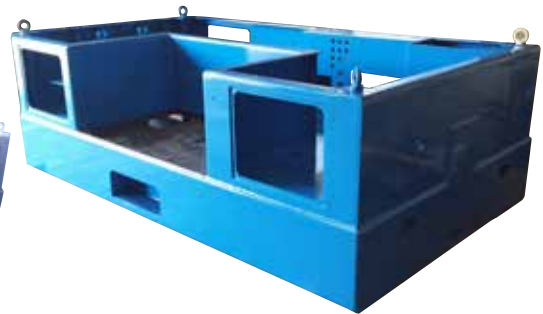
51



52



53



54



55



56



57



58



59



60



61



62



63



64



65



66



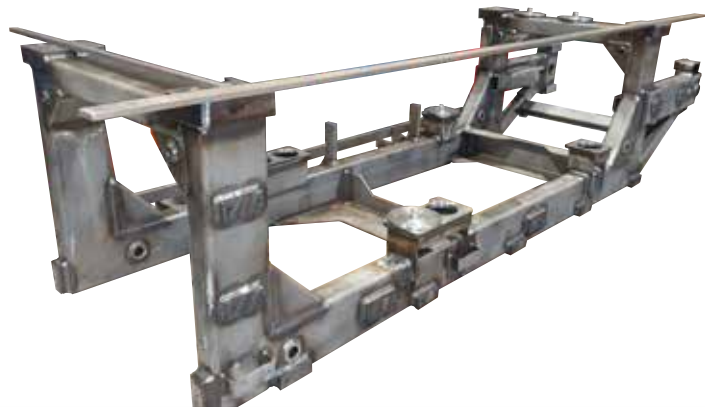
67



68



69



70







76



77



78



79



80



81



82



83

PRESS BENDING SECTOR

FROM 84
TO 93



84



85



86



87



88



89



90



91



92



93

WOODWORKING MACHINERY

FROM 94
TO 109



94



95



96



97



98



99



100



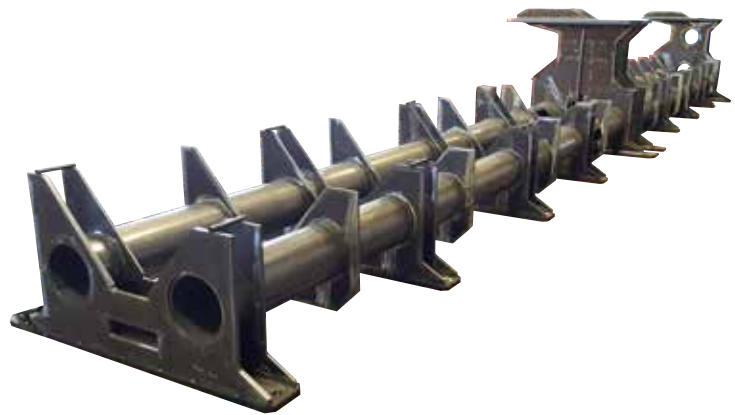
101



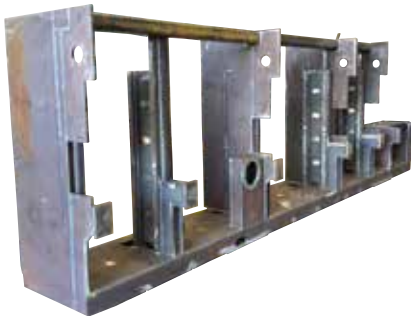
102



103



104



105



106



107



108



109

AIRPORT SECTOR

FROM 110
TO 118



110



111



112



113



114



115



116



117



118

OFFSHORE

119 & 120



119



120



PLANT ENGINEERING SECTOR

FROM 121
TO 138



121



122



123



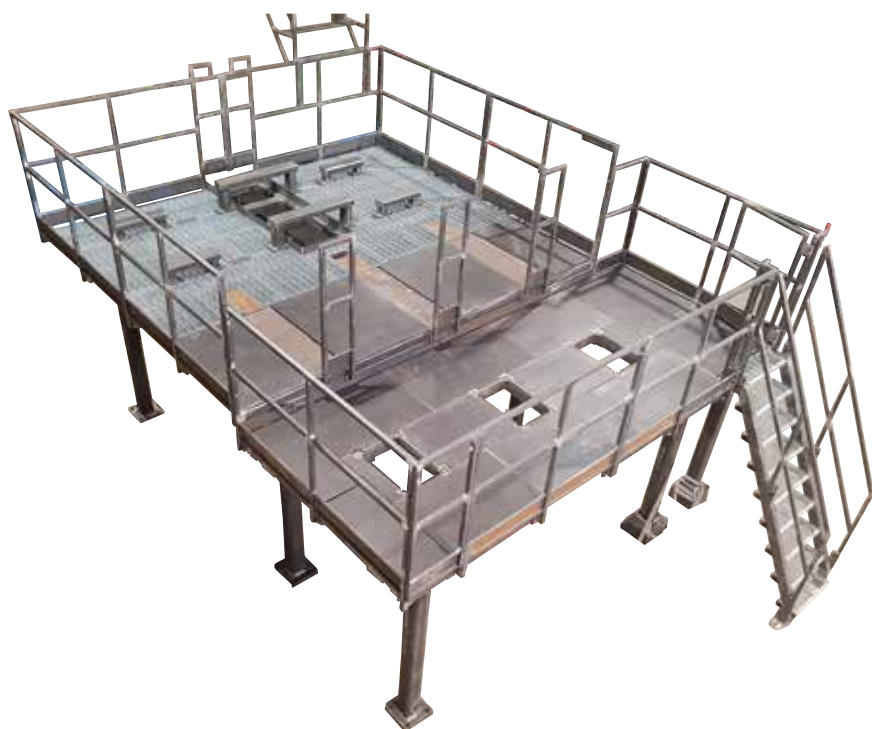
124



125



126



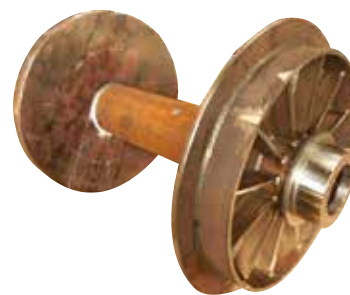
127



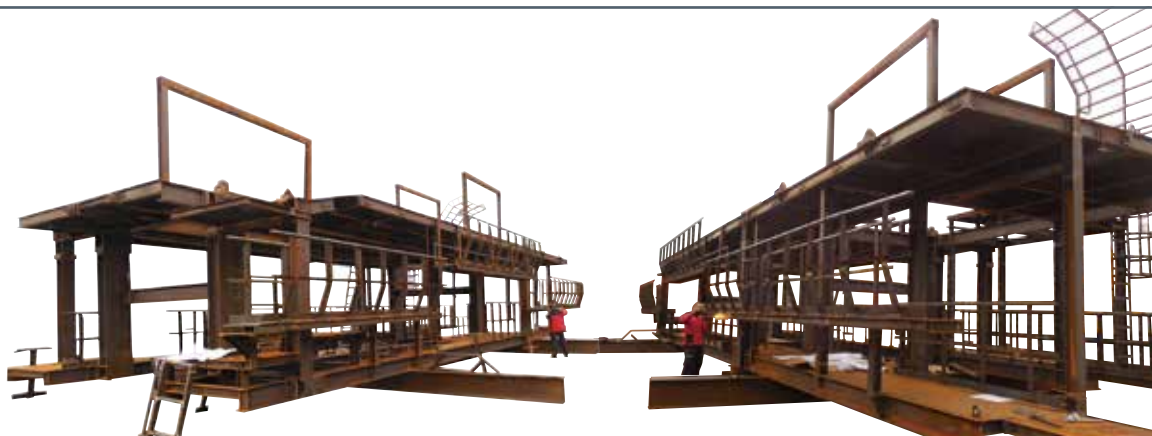
128



129



130



131



132



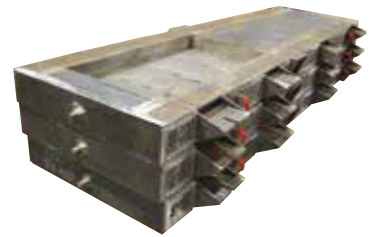
133



134



135



136



137



138

PRESS SECTOR

FROM 139
TO 144



139



140



141



142



143



144

DRILLING SYSTEMS

FROM 145
TO 181



145



146



147

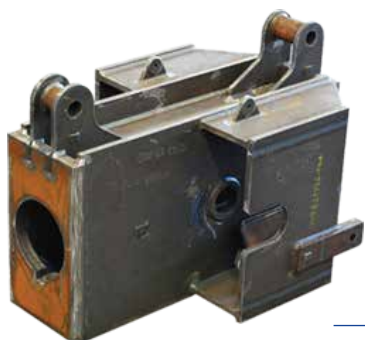


148



149





150



151



152



153



154



155



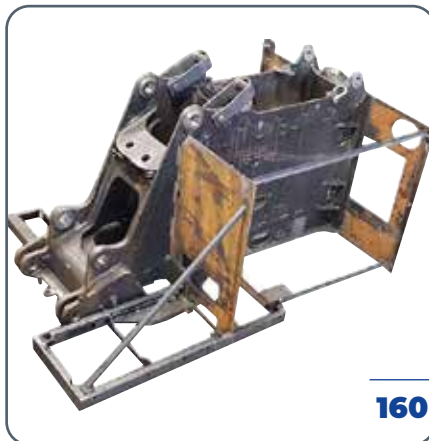
156



157



158





165



166



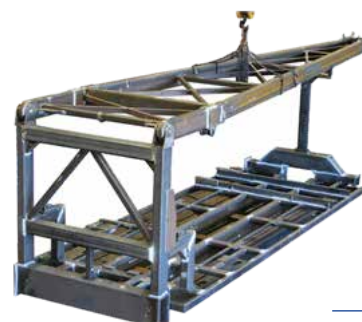
167



168



169



170



171



172



173



174



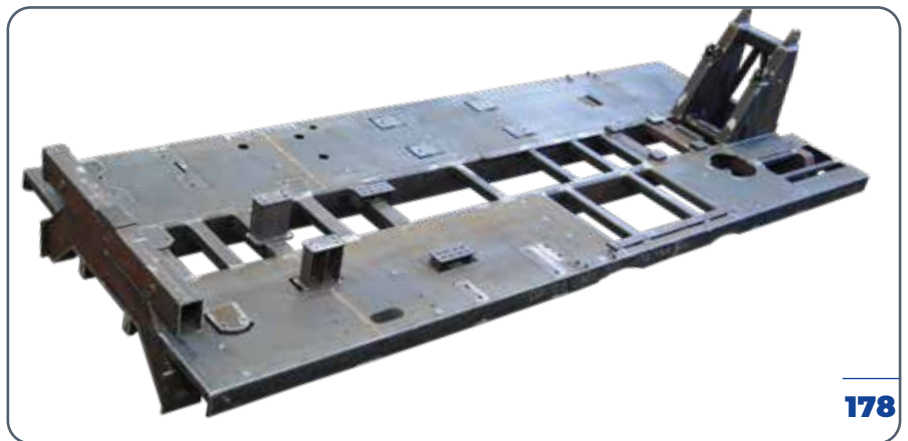
175



176



177



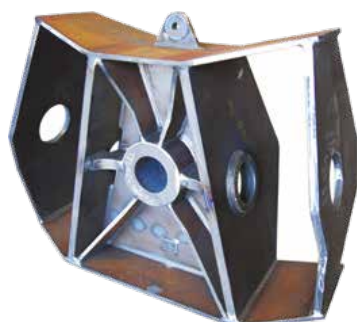
178



179



180



181



WIRE DRAWING MACHINES

182



182

ENERGY SECTOR

FROM 183
TO 193



183



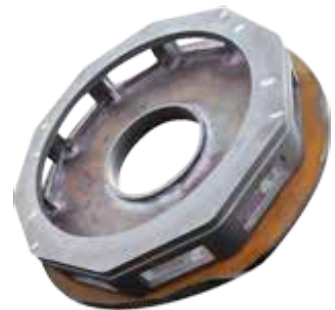
184



185



186



187



188



189



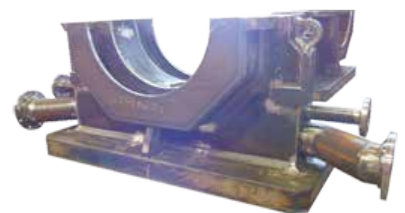
190



191



192



193

REDUCTION UNITS

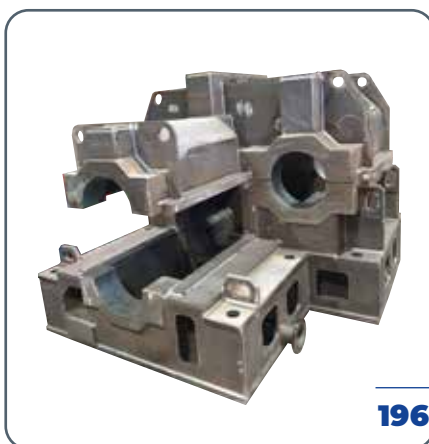
FROM 194
TO 201



194



195



196



197



198



199



201



200

LIFTING SYSTEMS

FROM 202
TO 209



202



203



204



205



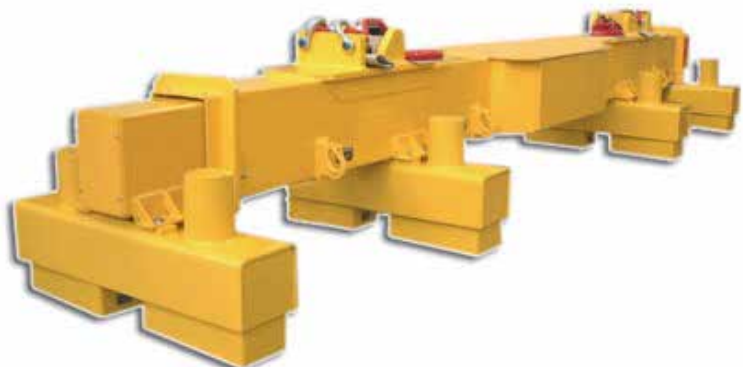
206



207



208

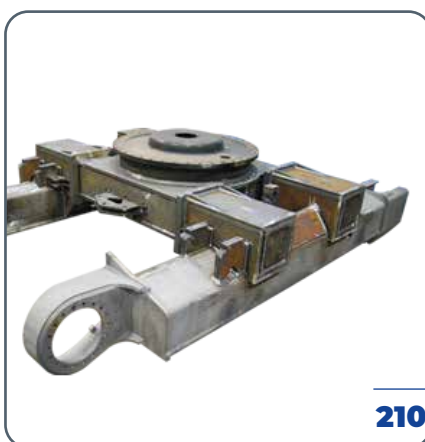


209



EARTHMOVING SECTOR

FROM 210
TO 221



210



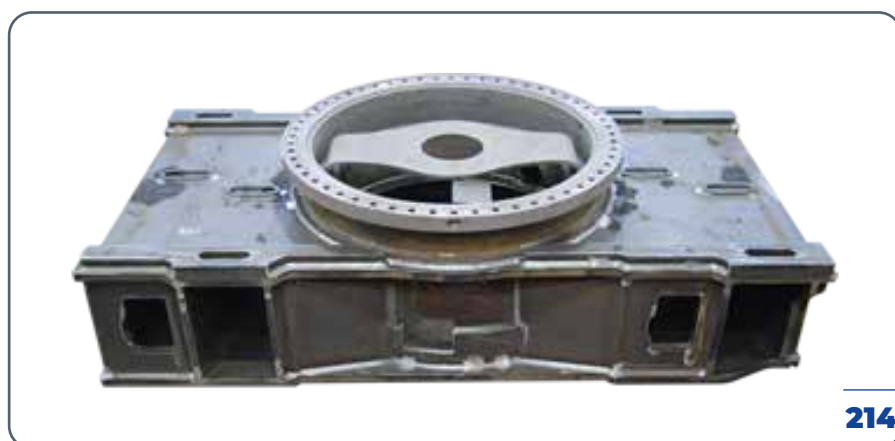
211



212



213



214



215



216



217



218



219



220



221

SHIPBUILDING

FROM 222
TO 229



222



223



224



225



226



227



228



229



MARBLE WORKING MACHINERY

FROM 230
TO 234



230



231

232



233

234



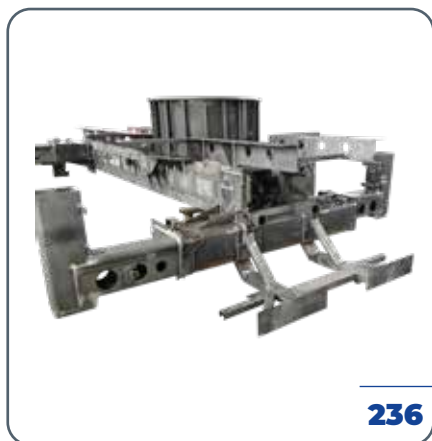


TRUCK-BUILDING SECTOR

FROM 235
TO 239



235



236



237



238



239



WIND ENERGY SECTOR

240 & 241



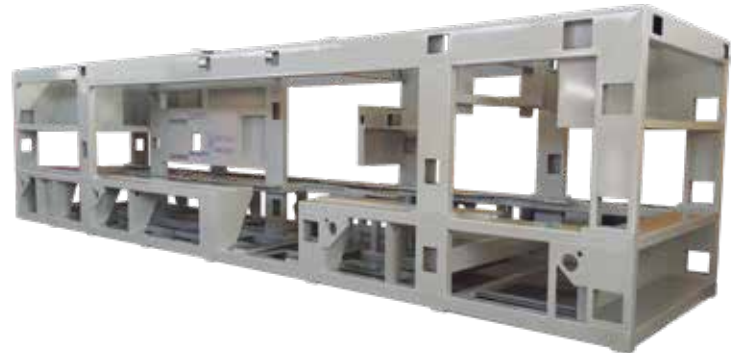
240



241

PACKAGING

242



242

NONWOVEN FABRIC

243 & 244



243



244

AMUSEMENT PARKS

FROM 245
TO 251



245



246



247



248



251



249



250

SHREDDING & RECYCLING

FROM 252
TO 257



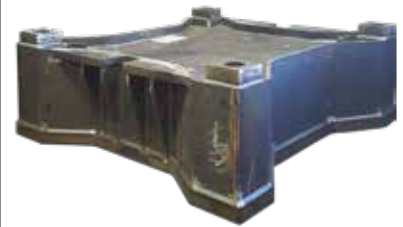
252



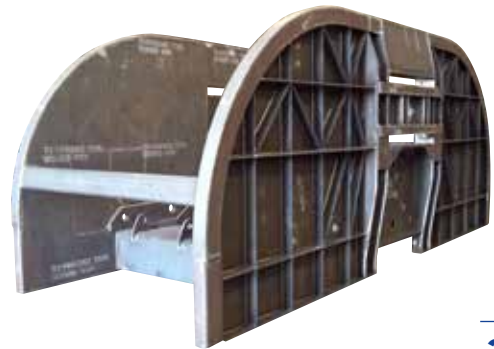
253



254



255



256



257





258

MILITARY SECTOR

FROM 258
TO 263



259



260



261



262



263



MADEWEB.IT



**Bamu is part of
TEAM TECNOCARP**

Certified quality, finished product: the strength of a team in the
field of mechanical constructions

BAMU s.r.o.

Strojárenská 19 | 976 46 Valaská Slovenská Republika
tel: +421 48 3810752 | email: bamu@bamu.sk